

TRAIN ACCIDENTS & REPAIRS

THIS IS HAPPENING IN AND NEAR VANCOUVER, WA



1

APRIL 24, 2024

- THE COLUMBIAN ARTICLE ABOUT THE TRAIN YARD IN LINCOLN NEIGHBORHOOD POLLUTING THE AIR WITH TRAIN ENGINE DIESEL EXHAUST
 - NOT DISCLOSING THE CONTENTS OF THE POLLUTION
 - STATING THEY ARE EXEMPT FROM THE FEDERAL EPA RULES



<https://focv.info>

2

TRAIN CARS DERAILED IN PORTLAND, OR

- APRIL 29TH, 2024
- UNION PACIFIC FREIGHT TRAIN HAD 6 CARS THAT WERE DERAILED NEAR THE STEEL BRIDGE
- FOX 12 OREGON KPTV.COM
- [HTTPS://WWW.KPTV.COM/2024/04/30/CREWS-CLEARING-TRACKS-AFTER-STEEL-BRIDGE-TRAIN-DERAILMENT/?FBCLID=IWZXH0BGNHZW0CMTAAAR3YYFHAM7OYPOHUZK66EDJ8KE_0YSWSEM6LUWCK08Q8F2ZQVDC9LSDKJLQ_AEM_AW9IXKR1TC9LUQNEJXEMSVXEZ_2BE10I1X1DGYBLZ5JDYKORME9728FJPL1DKP55KKETO35JA83HKJIFEXOVFL](https://www.kptv.com/2024/04/30/crews-clearing-tracks-after-steel-bridge-train-derailment/?fbclid=IWZXH0BGNHZW0CMTAAAR3YYFHAM7OYPOHUZK66EDJ8KE_0YSWSEM6LUWCK08Q8F2ZQVDC9LSDKJLQ_AEM_AW9IXKR1TC9LUQNEJXEMSVXEZ_2BE10I1X1DGYBLZ5JDYKORME9728FJPL1DKP55KKETO35JA83HKJIFEXOVFL)



RAILROAD INSPECTORS WALK THE LINE

- TWO INSPECTORS WALKED THE LINE IN THE CHELATCHIE AREA. THE TRACKS WERE OBSERVED TO BE IN WORSE CONDITION THAN WHAT WAS DESCRIBED
- NEIGHBOR WAS TOLD THAT IT WILL COST NORTH OF \$100 MILLION TO REPAIR THE TRACKS



WHERE IS THE MONEY COMING FROM

- GRANTS
- TAXES
- COUNTY RESIDENTS



<https://focv.info>

5

TRAIN BLOCKS SKAMANIA RESIDENTS

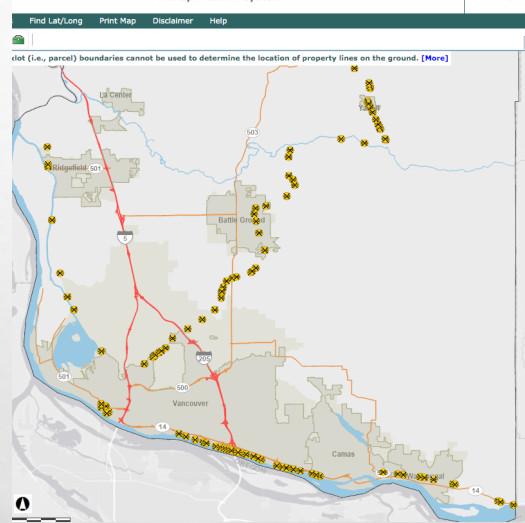
- FOX 12 INVESTIGATES [HTTPS://YOUTU.BE/ZJ KV4X RFM?FEATURE=SHARED](https://youtu.be/zjKV4XRfM?feature=shared)
- TRAIN BLOCKED THE COMMUNITY FREQUENTLY
 - COULD BE 30 MINUTES COULD BE 2 HOURS
- BLOCKED ROADS ARE MULTIPLE TIMES A DAY



<https://focv.info>

6

RAILROAD CROSSINGS ALONG THE 33 MILES



58 individual railroad crossings along the Chelatchie Prairie RR all along the 33 mile line



<https://focv.info>

7

LACK OF LOCAL POWER

- LOCAL GOVERNMENT (CITIES) CANNOT REGULATE HOW FREQUENTLY NOR HOW LONG A TRAIN CAN BLOCK ANY INTERSECTION.
- MARYSVILLE, OHIO, A SMALL MUNICIPALITY, PASSED A LAW THAT REGULATED TIME AND MANNER OF RAIL OPERATORS BLOCKING INTERSECTIONS AND CROSSINGS. RAILROAD APPEALED
 - OHIO SUPREME COURT RULED IN FAVOR OF THE RAILROAD OPERATOR
 - US SUPREME COURT DENIED REVIEW
 - OUTCOME WAS THE OHIO STATE SUPREME COURT RULING INTACT-CITY COULD NOT REGULATE CROSSINGS
 - SIX MONTHS LATER, A TRAIN DERAILED 200 MILES AWAY IN EAST PALESTINE, OHIO CAUSING EXTENSIVE AND IRREPARABLE DAMAGE



<https://focv.info>

8

IS THIS WHAT WE WANT?

- INCREASE IN TAXES
- DECREASE IN OUR QUALITY OF LIFE
- DECREASE IN OUR QUALITY OF DRINKING WATER
- INCREASE DANGER TO OUR NEIGHBORHOODS - POTENTIAL DERAILMENTS
- BLOCKED INTERSECTIONS FOR UNLIMITED PERIODS OF TIME



<https://focv.info>

9

JOIN OUR OPPOSITION

- WRITE THOSE LETTERS
- VOICE YOUR CONCERNS
- SUPPORT OUR SOLUTION ABOUT CONVERTING THE RAIL LINES INTO A TRAIL TO BE USED BY THE COMMUNITY
- CREATE A TOURIST DESTINATION



<https://focv.info>

10